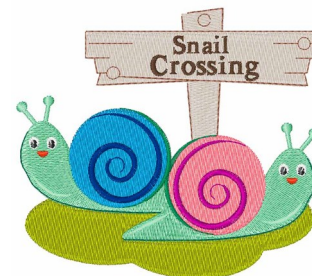


Name: Snail Crossing Machine Embroidery Design

SKU: WD02-JLA001694C

Brand: Windmill Designs

Unique Colors: 13 (15 color Stops)



Unique Colors

| | Color Name (Color Code) | Manufacturer - Type |
|--|--|-----------------------------|
|  | Super White (1001) [No Color Selected] | madeira - rayon |
|  | Dusty Lilac (1263) [No Color Selected] | madeira - rayon |
|  | Crocus (286) | Exquisite - Polyester 1000m |

Complete Color Sequence

| # | | Color Name (Color Code) | Manufacturer - Type |
|---|--|--|--------------------------------|
| 1 | | Super White (1001) [No Color Selected] | madeira - rayon |
| 2 | | Super White (1001) [No Color Selected] | madeira - rayon |
| 3 | | Crocus (286) | Exquisite - Polyester 1000m |