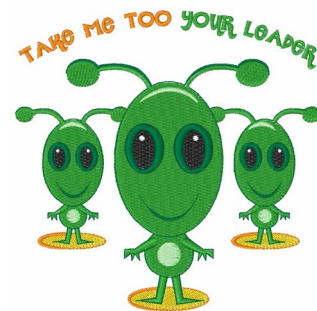


**Name:** Take Me Machine Embroidery Design

**SKU:** WD02-JLA001668C

**Brand:** Windmill Designs

**Unique Colors:** 13 (12 color Stops)



## Unique Colors

	Color Name (Color Code)	Manufacturer - Type
	Super White (1001) [No Color Selected]	madeira - rayon
	Dusty Lilac (1263) [No Color Selected]	madeira - rayon
	Crocus (286)	Exquisite - Polyester 1000m

# Complete Color Sequence

#		Color Name (Color Code)	Manufacturer - Type
1		Super White (1001) [No Color Selected]	madeira - rayon
2		Super White (1001) [No Color Selected]	madeira - rayon
3		Crocus (286)	Exquisite - Polyester 1000m