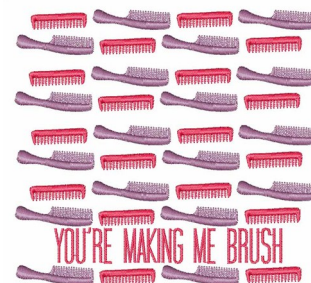


**Name:** Making Me Brush Machine Embroidery Design

**SKU:** WD02-JLA000986D

**Brand:** Windmill Designs

**Unique Colors:** 13 (3 color Stops)



## Unique Colors

	<b>Color Name (Color Code)</b>	<b>Manufacturer - Type</b>
	Super White (1001) [No Color Selected]	madeira - rayon
	Dusty Lilac (1263) [No Color Selected]	madeira - rayon
	Crocus (286)	Exquisite - Polyester 1000m

# Complete Color Sequence

#		Color Name (Color Code)	Manufacturer - Type
1		Super White (1001) [No Color Selected]	madeira - rayon
2		Super White (1001) [No Color Selected]	madeira - rayon
3		Crocus (286)	Exquisite - Polyester 1000m